



KOTA **W**OMEN  
**W**EAVERS



Rajasthan is the home to a wide range of ethnic handicrafts and textiles. Kota Doria is a special weave in the western part of the country in the state of Rajasthan. Kota saris were primarily patronized by Maharao Bhim Singh, who summoned the weavers from the Deccan region to Kota, between 1707 and 1720. The weavers of this fabric were originally located at Kaithun village in Kota district.

The **Kota Doria** fabric is characterized by a distinct square pattern of checks. It is mostly practiced by the Ansari weavers' community, over three-fourth of the weavers are women. They are primarily dependent on weaving and ancillary work for their livelihood. These women weavers were good in their skills but lacking information on customized designs, market trends and linkages and an understanding of the importance of collectivism.

**AIACA** has worked in Kota with these women weavers for a while now. Primarily, they were individual artisans who later organized into Self Help Groups (SHGs) for their capacity development in the areas of design innovation, product diversification, business skills, inventory management, and direct market linkages. This intensive engagement was to provide necessary business development and enterprise promotion support to the Kota women weavers so that they can successfully match and fulfill the current demand and market expectations, thus contributing to their income growth and sustainable livelihood. It also aimed to create a strong identity of the Kota women weavers in order to make them the direct promoters of their own craft in diverse markets.

**Siddika SHG** has been democratically selected by other groups and members to work as a facilitating unit for the Kota women weavers and has also been registered under the Ministry of Micro, Small and Medium Enterprises (MSME) and will act as the collective of the groups. The group is capacitated in a way to provide all support and facilitation to the groups in terms of production and marketing. It works in coordination with the other groups when orders come in, by facilitating buyer-seller meets, finalizing the costs, ensuring raw material supply, technical inputs for designs, and so on.

**This e-catalogue is a representation of the products that have been woven by the women weavers. All yarns are dyed in azo-free safe dyes and the products are woven on handlooms by the women weavers who are part of the group.**





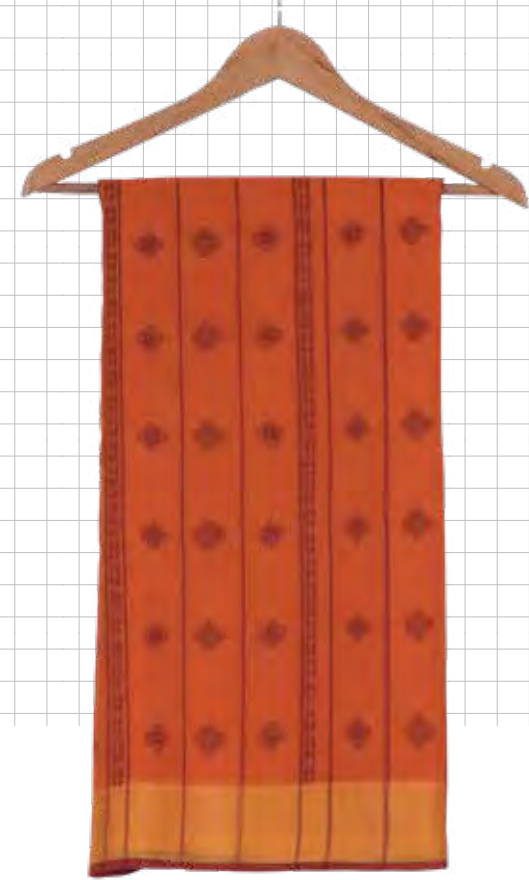
# Sarees





**SR 01** | INR 5950





**SR 02 & 02A | INR 5250**





**SR 03 A** | INR 4800





**SR 03 A 1 | INR 5400**





**SR 03 C** | INR 4200





**SR 04** | INR 5400





**SR 04 A** | INR 5500



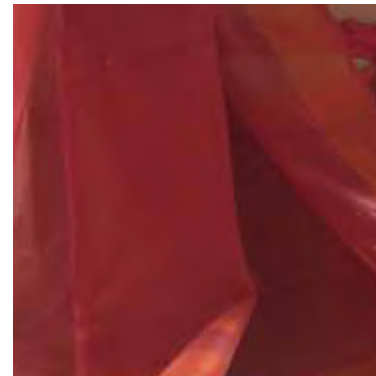


**SR 05** | INR 5250





**SR 09 A | INR 3700**



**SR 09 B** | INR 5400





**SR 12** | INR 5500





**SR 12 A** | INR 4500





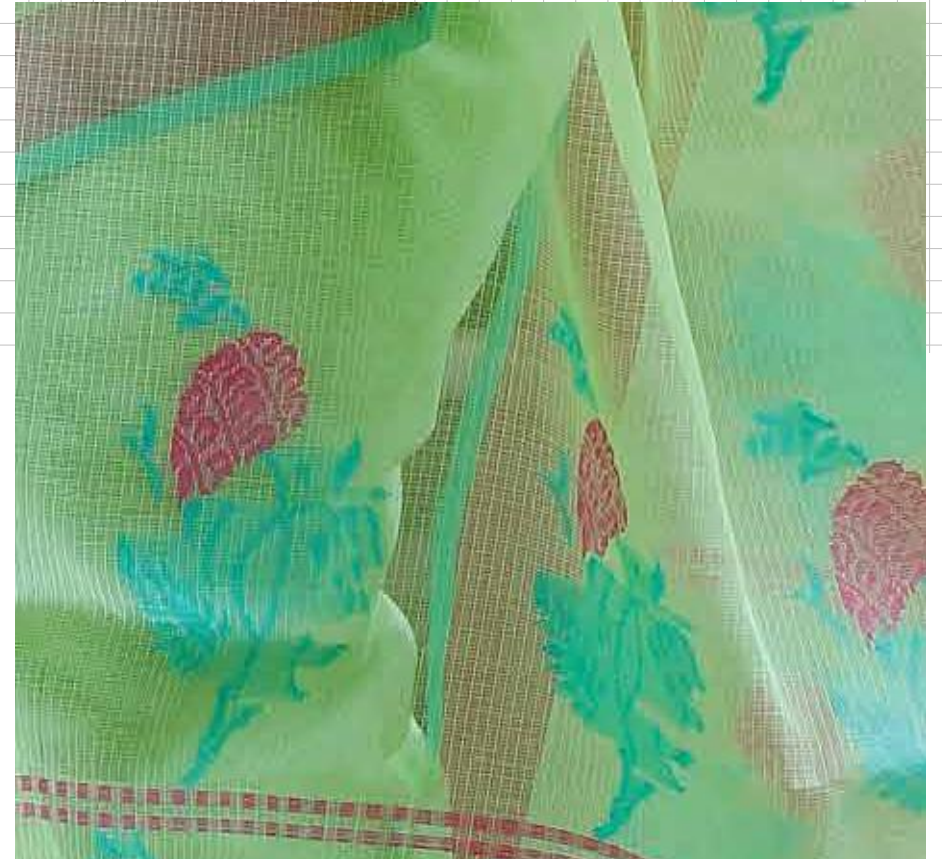
**SR 13** | INR 5500





**SR 14** | INR 7900





**SR 15** | INR 6900





**SR 16** | INR 7900





**SR 17** | INR 7900



**SR 21** | INR 5400





**SR 25** | INR 4865



**SR 30** | INR 8200





**SR 31** | INR 5400



**SR 32** | INR 4500



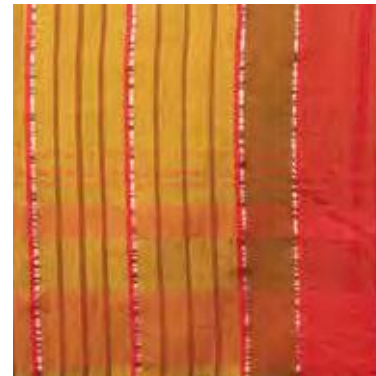


**SR 33** | INR 6500



**SR 34** | INR 5250





**SR 36** | INR 5300



**SR 37** | INR 7000





**SR 38** | INR 5100





**SR 39** | INR 6000





**SR 40** | INR 4600



**SR 41** | INR 5300





**SR 43** | INR 4400



**SR 44** | INR 4800





**SR 45** | INR 7500





**SR 46** | INR 5100





**SR 47** | INR 8500





**SR 48** | INR 8625





**SR 49** | INR 5500



**SR 51** | INR 5950





**SR 52** | INR 7000



**SR 53** | INR 6000





**SR 53 A | INR 6000**



**SR 54** | INR 5500





# Dupattas



**DU 01 A** | INR 1500





**DU 01 B** | INR 1500





**DU 01 C** | INR 1500





**DU 02 AA** | INR 1500





**DU 02 A** | INR 1500





**DU 03** | INR 1500



**DU 04** | INR 1500





**DU 06 A** | INR 1725



**DU 06 B** | INR 1725





**DU 07** | INR 1725





**DU 08** | INR 2550





**DU 09** | INR 1900



**DU 10** | INR 1275





**DU 13** | INR 1600



**DU 14** | INR 1600





**DU 15** | INR 1955





**DU 16** | INR 1600





**DU 17** | INR 1600





**DU 18** | INR 2050





**DU 21** | INR 1500





**DU 22** | INR 1650





**DU 23** | INR 1725





**DU 24** | INR 2100





All products are  
authentic handloom  
products certified by  
Craftmark



## Contact us

For orders and queries, please get in touch with

### Address

Siddika Kota Doriya Self Help Group Kaithoon  
Village Kaithoon, Kota, Rajasthan

### Contact Person

Shahanaz: +91 9351222685

Dilafroj Ansari: +91 9982839123 /+91 7014469913

### Email ID

kotawomenweavers@gmail.com

### Google Pay & Paytm

9982839123 (Dilafroj Ansari)

---

## Bank Details

### Account Name

Siddika Kota Doriya Self Help Group Kaithoon

Account Number  
46370100588004

Type  
Savings

IFSC Code  
BARBOBRGBXX

### Bank Name and Branch

Baroda Rajasthan Kshetriya Gramin Bank  
Kaithoon Dist - Kota (Raj) 325001